

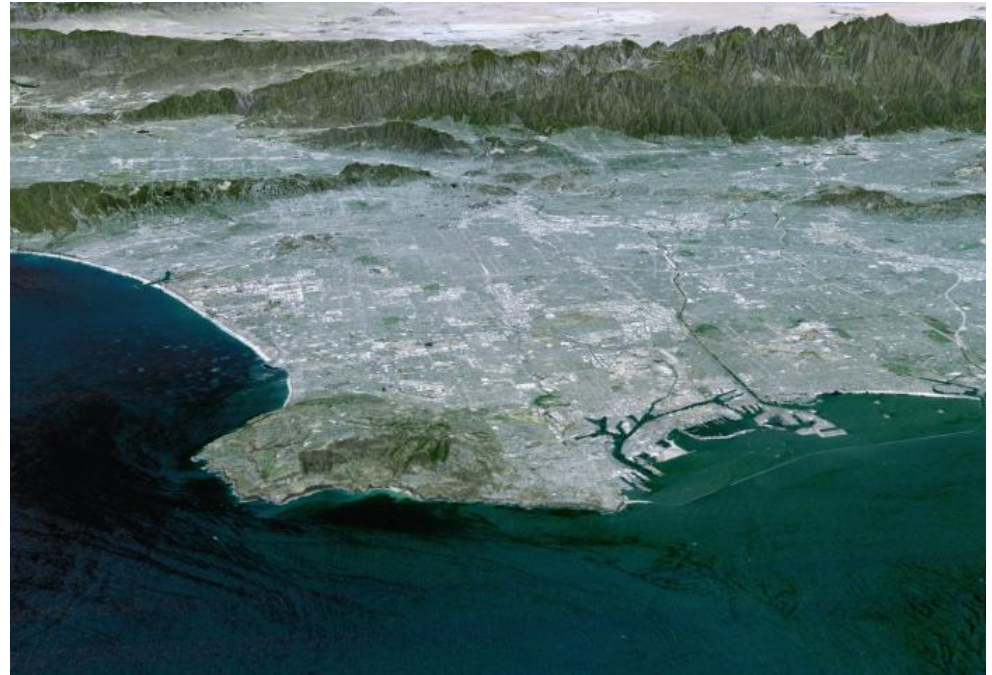
Cities and Urban Geography

- Historic Cities and City Functions
- Geographic Observations of City Location and Size
- The World's Largest Cities
- Suburbanization and Edge Cities
- Urban Problems



Cities and Urban Geography

- In 1950 1/3 of the world lived in a city.
- Today 1/2 of us live in cities and the number is




Historic Cities and City Functions

-  Cities as location of industry and services
-  Cities as centers of social and technological innovation and freedom

Historic City Functions

 **Commercial Centers** - Fresno, Venice, New York

 **Industrial Cities** - Manchester, Detroit, Los Angeles

 **Primary Resources** - Scotia, Minas Gerais, Nevada City

 **Resort Cities** - Santa Barbara, Las Vegas, Marseille

 **Government / Religious Centers** - Monterey, D.C.,
Brasilia

 **Education Centers** - Palo Alto, Berkeley



U.S. Urban Growth Stages

Growth Stage	Energy Base	Transport Channel	Critical Location	Spatial Pattern	Sample Cities
pre-1820 LAND	<ul style="list-style-type: none"> human animals wind, water 	<ul style="list-style-type: none"> dirt roads (horses & wagons) rivers (flatboats) oceans (sailing ships) 	<ul style="list-style-type: none"> seaports on river mouths agricultural villages 	<ul style="list-style-type: none"> dispersed in agricultural areas linear dispersion along trans-shipment points 	<ul style="list-style-type: none"> Boston New York Philadelphia Hartford Charleston
1820-40s LABOR	<ul style="list-style-type: none"> water power steam engines (wood) 	<ul style="list-style-type: none"> rivers (steamboats) canals (steamboats) 	<ul style="list-style-type: none"> interior ports on rivers, lakes, canals 	<ul style="list-style-type: none"> linear dispersion along major waterways 	<ul style="list-style-type: none"> Cleveland Buffalo Pittsburgh
1840-60s CAPITAL	<ul style="list-style-type: none"> coal-burning steam engines 	<ul style="list-style-type: none"> iron railroads (to extend hinterlands only) 	<ul style="list-style-type: none"> interior rail nodes at lake, sea, & river ports 	<ul style="list-style-type: none"> urban centers connected to the national markets 	<ul style="list-style-type: none"> Chicago
1860-1920s AGE OF ENTERPRISE	<ul style="list-style-type: none"> coal and steam electricity 	<ul style="list-style-type: none"> steel railroads (specialized cars and fast service) 	<ul style="list-style-type: none"> rail centers without regard to water sites 	<ul style="list-style-type: none"> dispersed in western and southern US periphery to access natural resources 	<ul style="list-style-type: none"> Dallas San Francisco
1920- INFORMATION	<ul style="list-style-type: none"> internal combustion engines natural gas & oil 	<ul style="list-style-type: none"> many different types of transport 	<ul style="list-style-type: none"> highways, airports now follow cities 	<ul style="list-style-type: none"> major new metropolitan centers in the periphery based on amenity resources 	<ul style="list-style-type: none"> Los Angeles Miami

Ancient World Cities

Oldest cities are found in Mesopotamia, Egypt, China and Indus Valley.

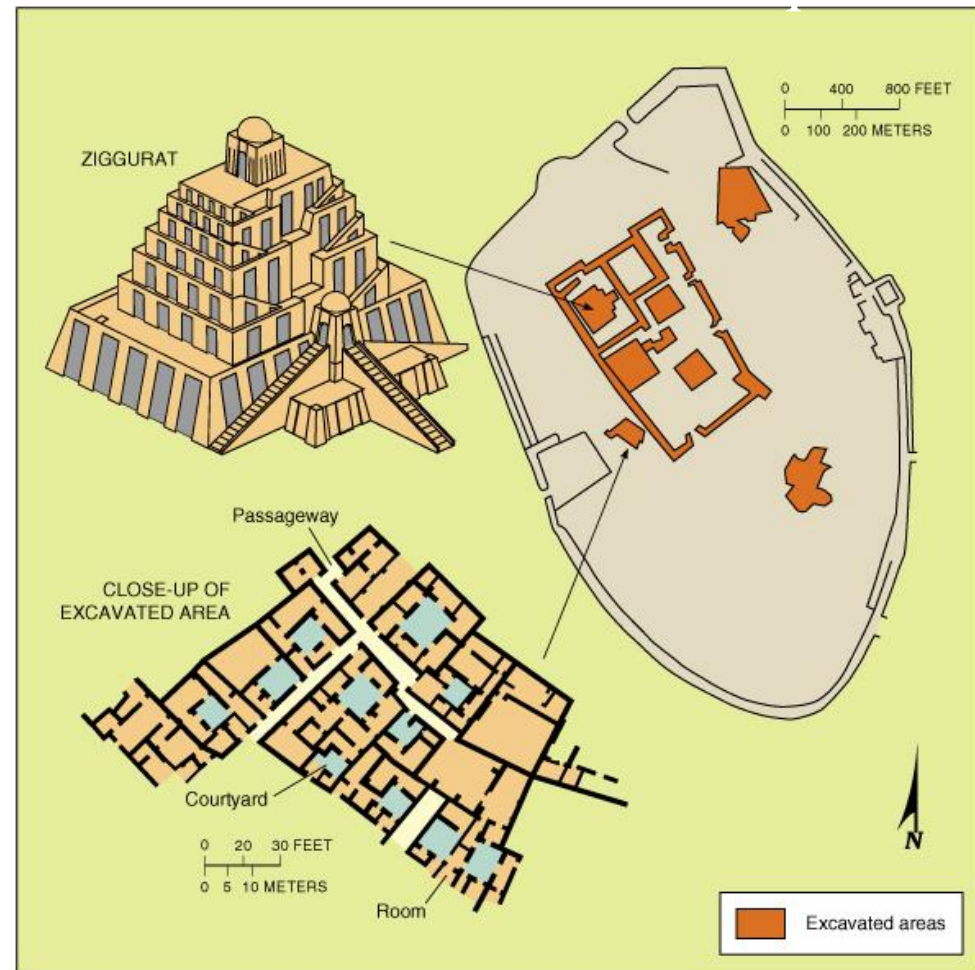
Mesopotamia (Jordan/Iraq)

Jericho 10,000 B.C.

Ur 3,000 B.C. (Iraq)

Walled cities based on agricultural trade

Ziggurat (stepped temple)



Ancient World Cities

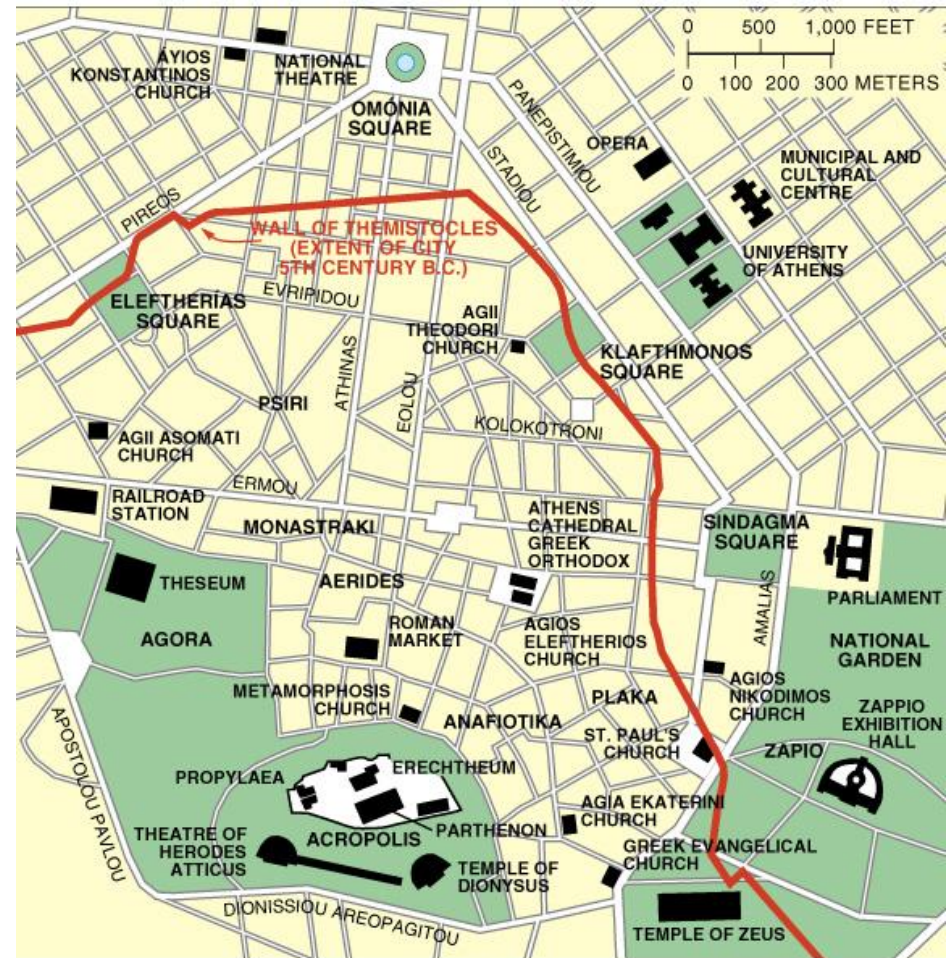
Oldest cities are found in Mesopotamia, Egypt, China and Indus Valley.

E. Mediterranean

Athens 2,500 B.C.

1st city to exceed 100,000

Many cities organized into City-States



Medieval World Cities

After collapse of Roman Empire in 5th Century, Europe's cities were diminished or abandoned.

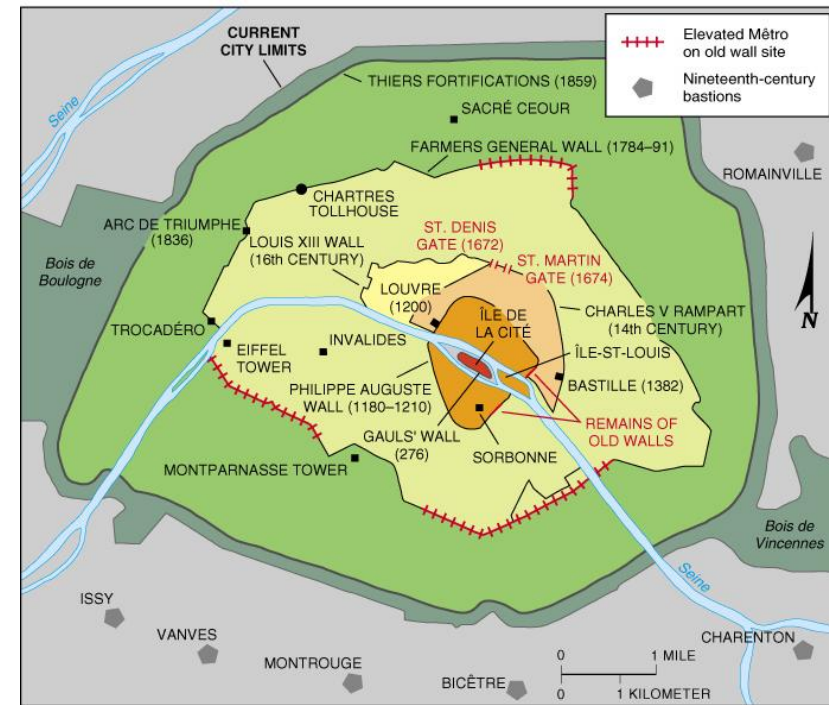
European Feudal Cities

Begin in 11th Century

Independent cities formed in exchange for military service to feudal lord.

Improved roads encouraged trade

Dense and compact within defensive walls



Medieval World Cities

Cittadella, Italy



Modern World Cities

A high percentage of world's business is transacted and political power is concentrated in these cities.

Headquarters of large businesses

Media control centers

Access to political power

London, New York, Tokyo

Chicago, Los Angeles, Washington, Brussels, Frankfurt, Paris, Zurich, Sao Paulo, and Singapore



London, England

Urban Planning

Building Better Cities

How to Make a Great City

Famous Planned Cities

Canberra

Brasilia

Washington, D.C.

Irvine, CA

Smart Growth

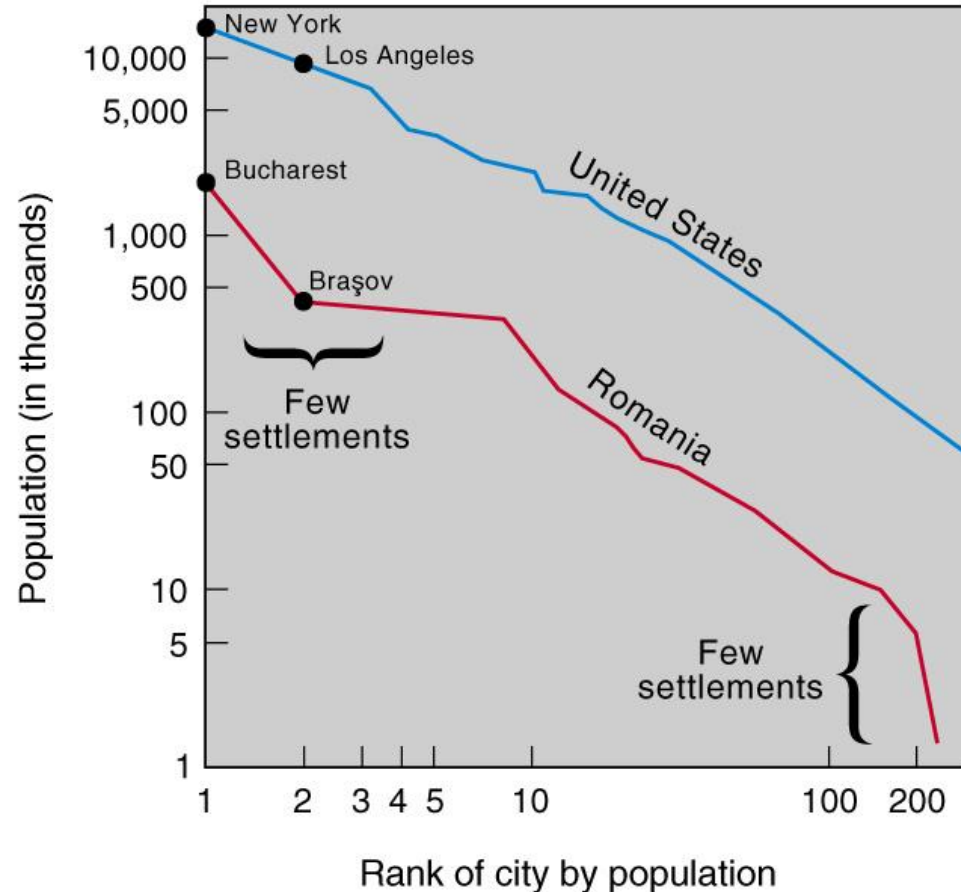
Pedestrian Friendly

Increase Density

Mix Ethnic and Income
Groups

Rank-Size Rule

Rank-Size Rule: n th-largest settlement is $1/n$ the population of the largest settlement. In other words, 2nd largest is $1/2$ the size of largest. Works best in most developed countries that have full distribution of services.



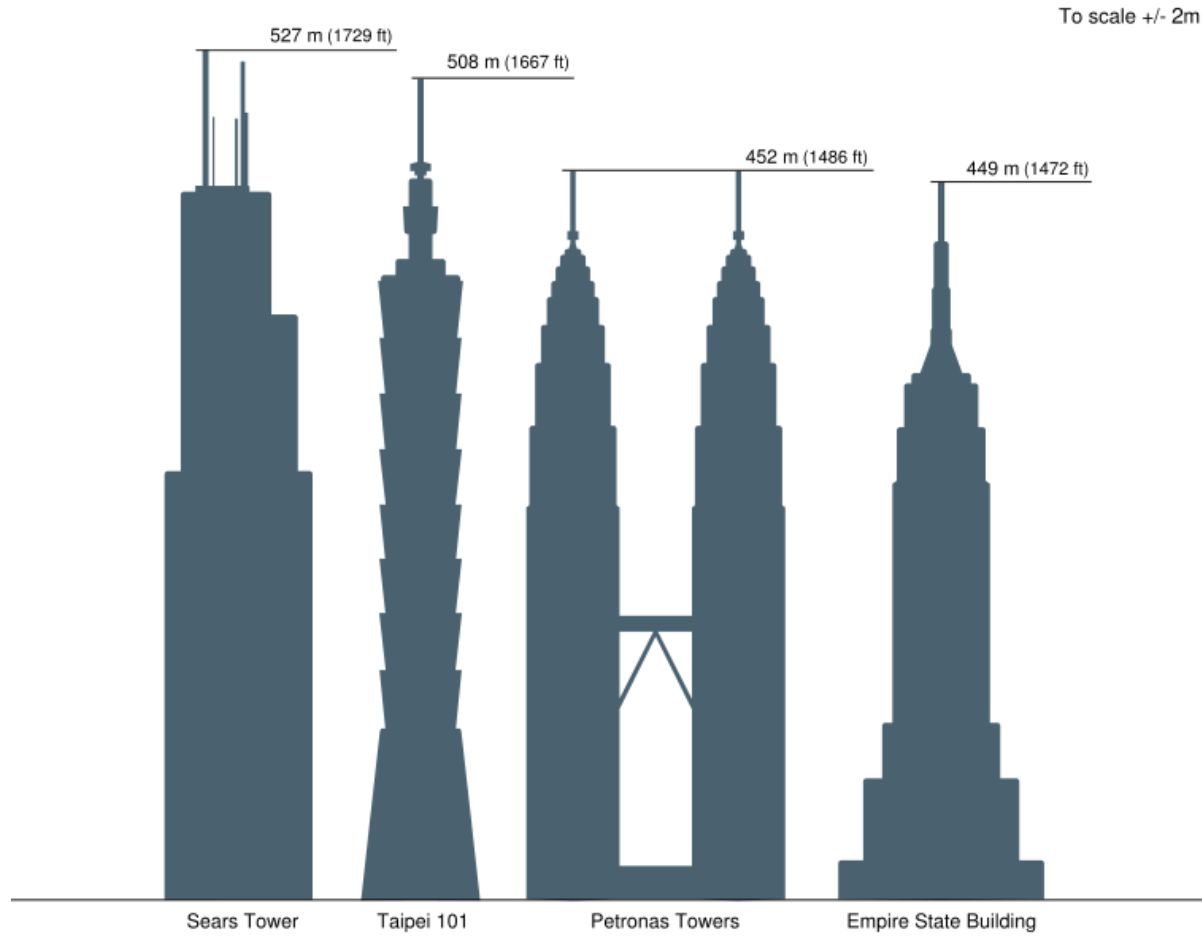
Primate City Rule

Largest settlement in a country has more than twice the number as the second ranking city. These cities tend to represent the perceived culture of the country.

Largest City	Population	Second-largest City	Population
Paris	9 million	Marseille	2 million
London	9 million	Birmingham	2 million

- Why build up?
- Why copy Western model?
- Where are the world's tallest buildings?

Skyscrapers



Largest World Cities

Ten Most Populous Today

Rank	City	Population
1	Tokyo, Japan	28 million
2	New York City, United States	20.1 million
3	Mexico City, Mexico	18.1 million
4	Mumbai, India (Bombay)	18 million
5	Sao Paulo, Brazil	17.7 million
6	Los Angeles, United States	15.8 million
7	Shanghai, China	14.2 million
8	Lagos, Nigeria	13.5 million
9	Kolkata, India (Calcutta)	12.9 million
10	Buenos Aires, Argentina	12.5 million

Largest World Cities

Ten Most Populous in A.D. 1975

1. Tokyo	19.8 million
2. New York	15.9 million
3. Shanghai	11.4 million
4. México	11.2 million
5. São Paulo	9.9 million
6. Osaka	9.8 million
7. Buenos Aires	9.1 million
8. Los Angeles	8.9 million
9. Paris	8.9 million
10. Beijing	8.5 million

Largest World Cities

Ten Most Populous by A.D. 2015

1. Tokyo	28.7 million
2. Bombay	27.4 million
3. Lagos	24.4 million
4. Shanghai	23.4 million
5. Jakarta	21.2 million
6. São Paulo	20.8
million	
7. Karachi	20.6 million
8. Beijing	19.4 million
9. Dhaka, Bangladesh	19.0 million
10. México	18.8 million

Megalopolis

Illustrates the difference between strict city proper definitions and broader urban agglomerations.

To define urbanized areas, the U.S. Census Bureau uses the term Metropolitan Statistical Area (MSA) or Consolidated MSA (CMSA) if two of them overlap.



Changes in Cities in the U.S.

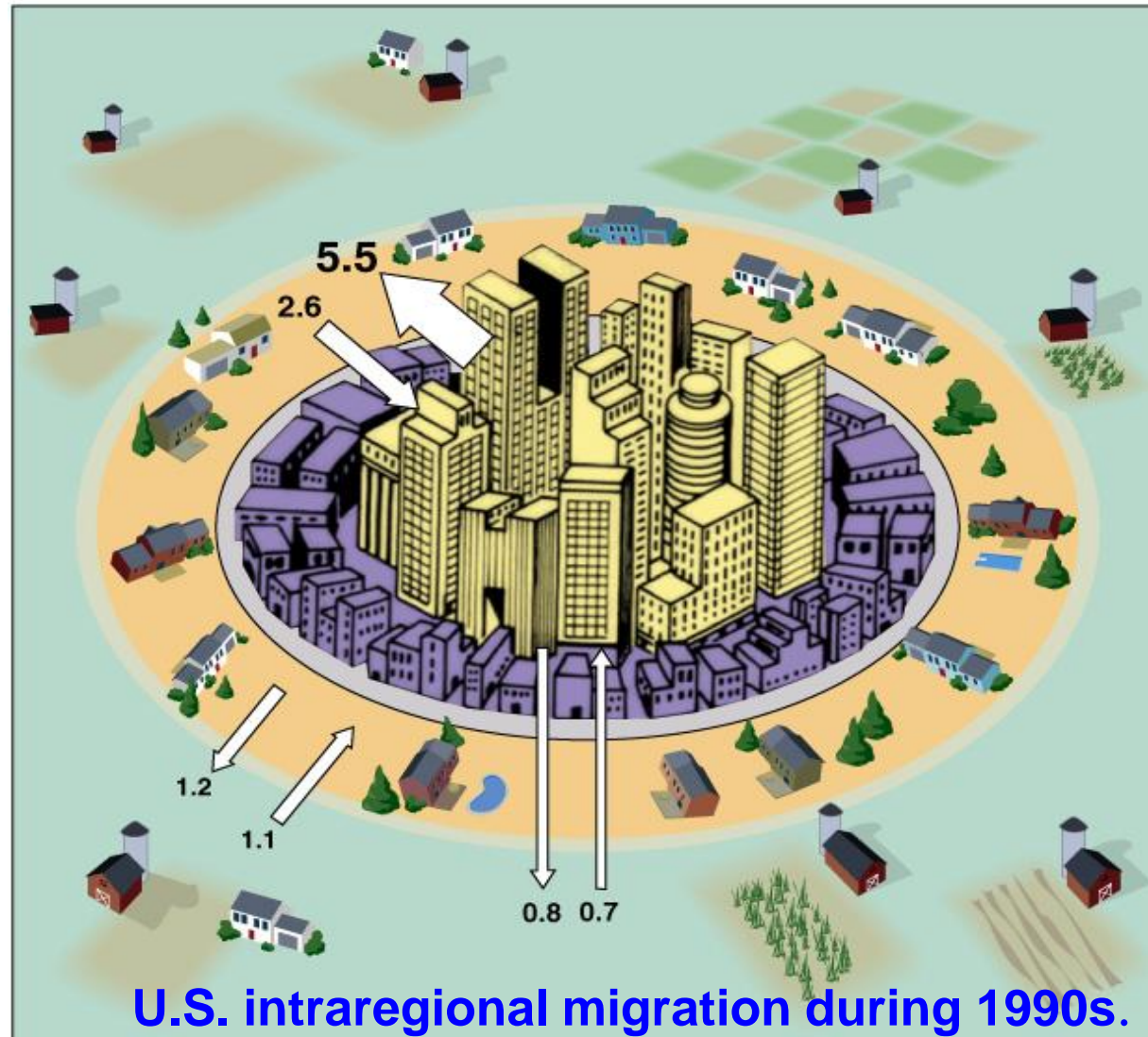
U.S. population has been moving out of the city centers to the suburbs: suburbanization and counterurbanization

Developed Countries: suburbanization

- wealthy move to suburbs
- automobiles and roads; 'American Dream'
- better services
- wealthy move to suburbs

counterurbanization

- idyllic settings
- cost of land for retirement
- slow pace, yet high tech connections to services and markets



Cities in Crisis, Urban Problems

U.S. City Problems

Sprawl

commutes

environmental problems

tax flight

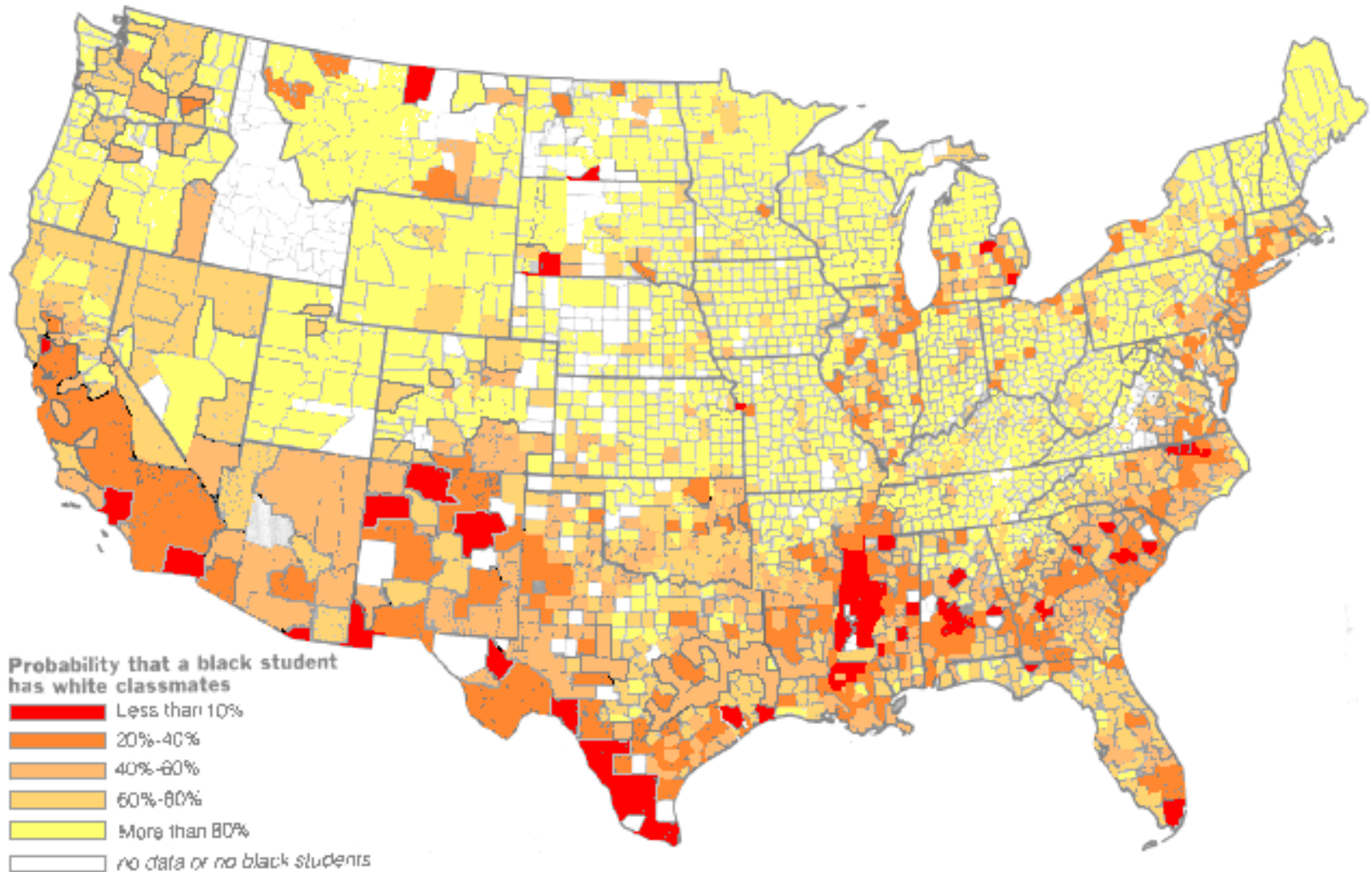
Racial and Economic Segregation

schools

taxes

democracy

School Segregation



Source: adapted from the New York Times, April 2, 2000, p. A5.

Intraregional Migrations in LDCs

Populations in the less developed world are rushing to cities in search of work and income.

Rank	City	Population
1	Tokyo, Japan	28 million
2	New York City, United States	20.1 million
3	Mexico City, Mexico	18.1 million
4	Mumbai, India (Bombay)	18 million
5	Sao Paulo, Brazil	17.7 million
6	Los Angeles, United States	15.8 million
7	Shanghai, China	14.2 million
8	Lagos, Nigeria	13.5 million
9	Kolkata, India (Calcutta)	12.9 million
10	Buenos Aires, Argentina	12.5 million



Lagos, Nigeria



Mumbai, India



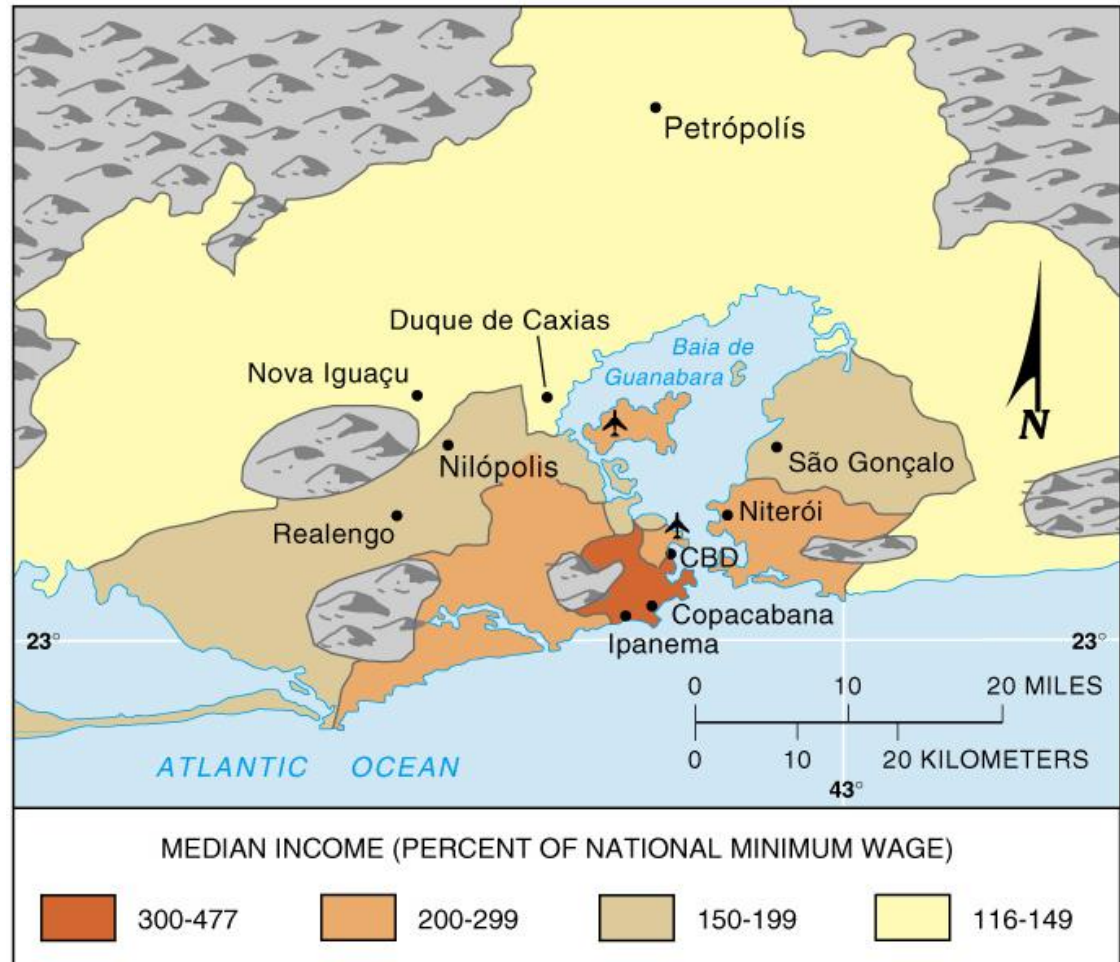
Mexico City, Mexico

Changes in Cities in LDCs

Populations of cities in the less developed world have been **surging**: urbanization, migration, natural increase

Urbanization in LDCs:

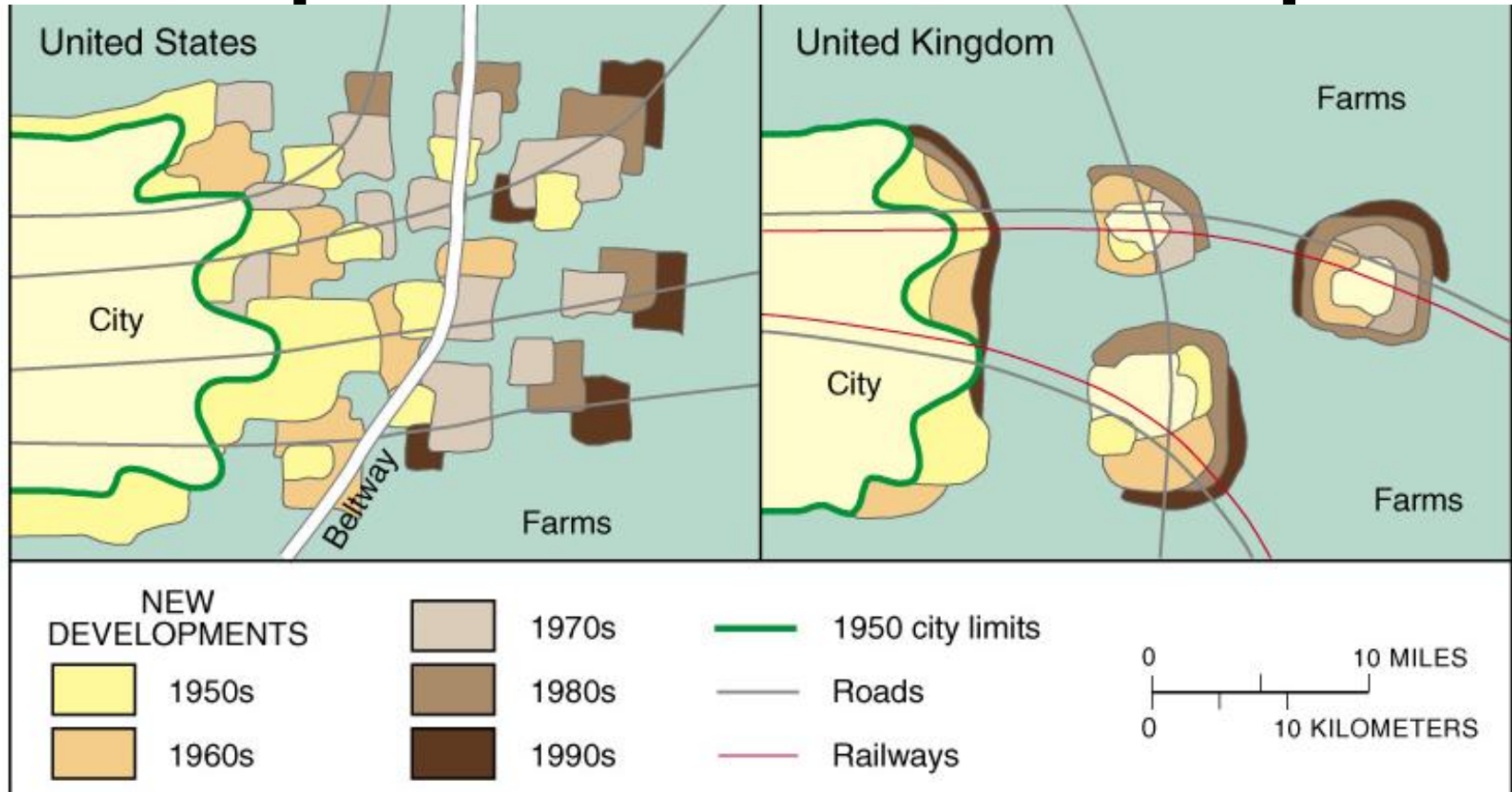
- driven by changes in global economy that make farming more challenging
- the poor live in the suburbs, rich live in CBD
- cities struggle to provide jobs and housing
- services overtaxed
- squatter settlements common



European Cities: result of very long histories

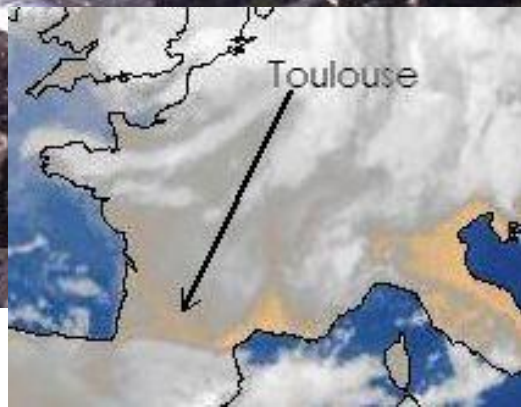
- ☐ **Complex street patterns** - prior to automobile, weird angles
- ☐ **Plazas and Squares** - from Greek, Roman, Medieval
- ☐ **High density and compact form** - wall around city or low-growth zoning
- ☐ **Low skylines** - many built before elevators, others required cathedral or monument to be highest structure
- ☐ **Lively downtowns** - center of social life, not just office work
- ☐ **Neighborhood stability** - Europeans moved less frequently than we do.
- ☐ **Scars of War** - many wars , many cities originally defensive
- ☐ **Symbolism** - gothic cathedrals, palaces, and castles
- ☐ **Municipal Socialism** - many residents live in buildings that are owned by city gov't. Some of these are massive housing projects, others small scale apartment buildings.

Europe versus U.S. Cities: Sprawl



European cities, including this hypothetical U.K. example, tend to restrict suburban development, thereby concentrating new development in and around existing concentrations. This leaves large rings of open space, so-called greenbelts.

What are the social costs of sprawl?



Toulouse, France



Ferrara, Italy



Sogne, Norway



Venice, Italy



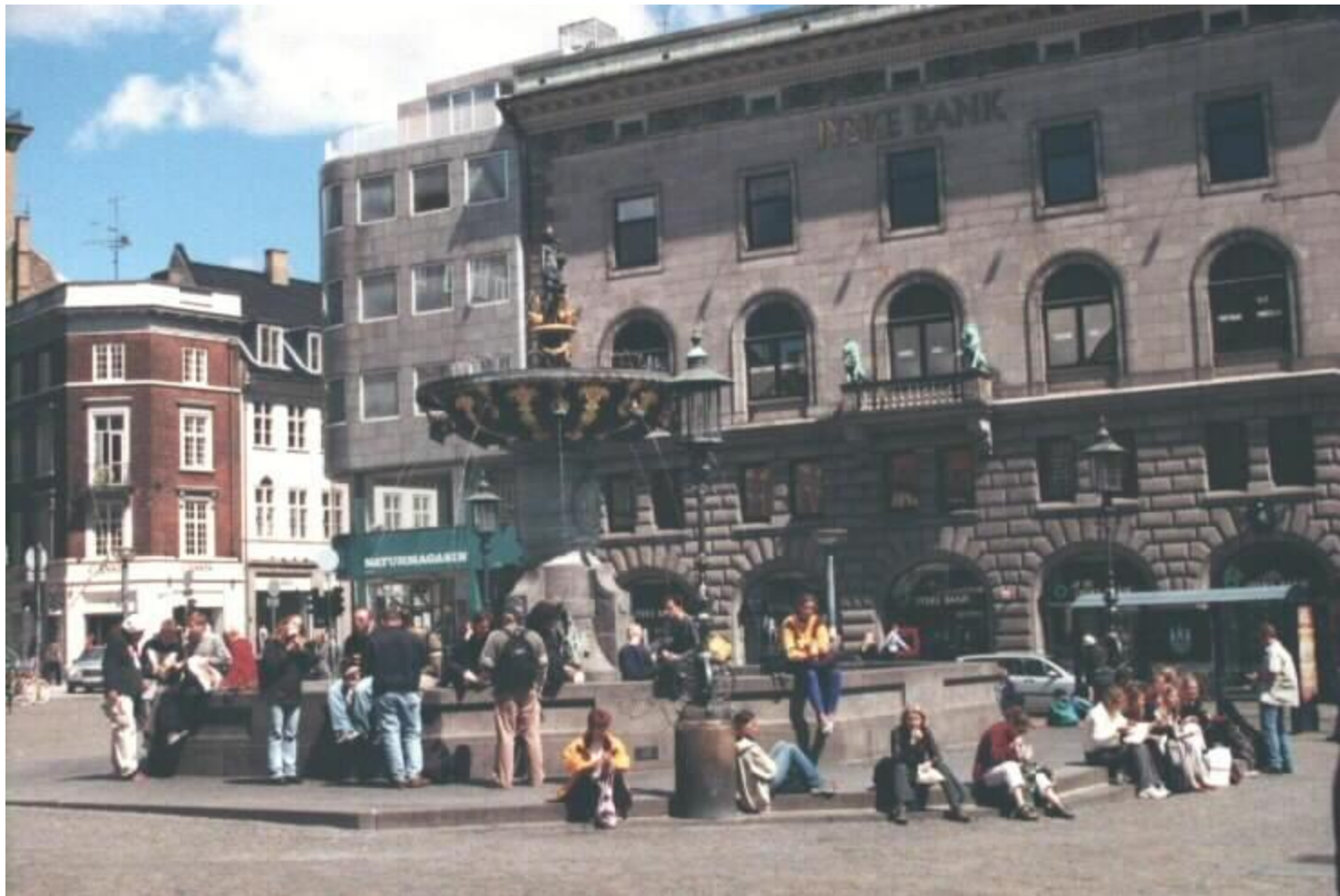
Gras, France



Amsterdam, The Netherlands



Florence, Italy



Copenhagen, Denmark